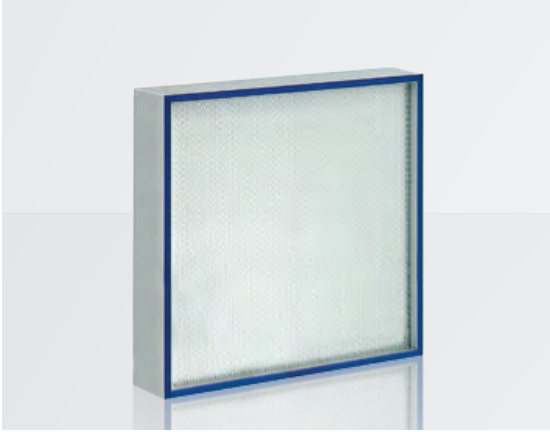


HEPAGEL-78-ARM

Hepa Filters With Gel Gasket
Jel Contalı Hepa Filtreler



HG11ARM2GG-0610-0610-78

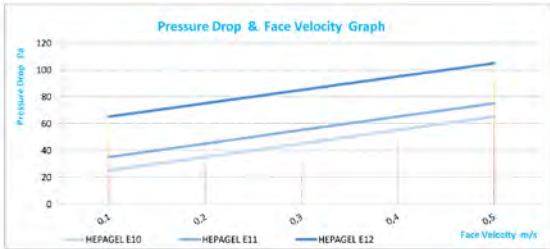
APPLICATIONS

- Used in systems made according to sealed with gel technique
- Clean rooms with LAF counters and
- Operating rooms

UYGULAMALAR

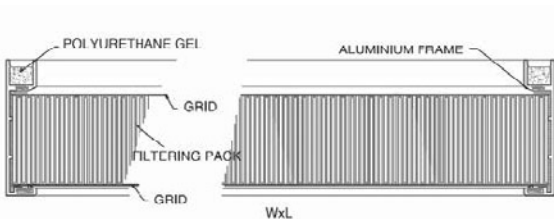
- Sızdırmaz jel tekniğine göre yapılan sistemlerde
- Temiz odalar LAF tezgahları ve ameliyat odalarında kullanılır

PRESSURE DROP&FACE VELOCITY GRAPH



Recommended final pressure drop \leq 600 Pa.

Maximum final pressure drop \leq 1000 Pa.



FILTER CODE STRUCTURE FİLTRE KOD YAPISI

Filter Type	HG HEPAGEL	
Filtre Tipi	HG HEPAGEL	
Filter Class EN 1822	11	E11
Filtre Sınıfı EN 1822	11	E11
Filter Frame	A	Aluminium
Filtre Çerçevesi	A	Alüminyum
Filter Media	R	Glass Fiber & Hot Melt
Filtre Malzemesi	R	Cam Elyaf ve Sıcak Tutkal
Filter Panel Depth	M	58 mm
Filtre Panel Derinliği	M	58 mm
Filter Surface Grid	2	Face Grids Air Out
Filtre Yüzey Teli	2	Yüzey Teli Hava Çıkışta
Filter Gasket Type	G	Gel Gasket
Filtre Conta Tipi	G	Jel Conta
Filter Gasket Direction	G	Air Inlet
Filtre Conta Yönü	G	Hava Giriş
Filter Size	0610-0610-78	
Filtre Ölçüsü	0610-0610-78	

TECHNICAL SPECIFICATIONS TEKNİK ÖZELLİKLER

Filter Class	EN 1822
Filtre Sınıfı	E10 E11 E12
Av. Efficiency	\geq 85 % \geq 95 % \geq 99,5%
Ort. Verimlilik	\geq 85 % \geq 95 % \geq 99,5%
Max.Working Temperature	80 °C
Max.Çalışma Sıcaklığı	80 °C
Relative Humidity	100%
Bağıl Nem	100%
Final Pressure Drop	600 Pa.
Son Basınç Düşümü	600 Pa.
Filter Stage	III
Filtre Kademesi	III

HEPAGEL-78-ARM Series Technical Data**HEPAGEL-78-ARM Serisi Teknik Veri**

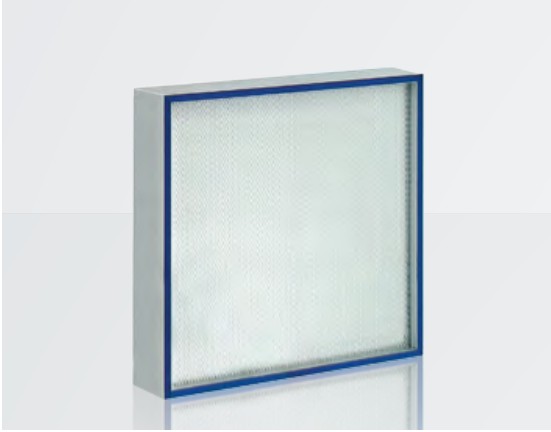
Filter Code	Size W x L x D	Filter Class EN 1822	Filter Depth mm	Filter Area m ²	Air Flow m ³ /h	In.Pressure D. Pa.	Weight kg
HG10ARM2GG	0305-0305-078	E10	78	2,80	150	60	1,85
HG10ARM2GG	0305-0610-078	E10	78	5,50	300	60	3,50
HG10ARM2GG	0457-0457-078	E10	78	6,00	350	60	4,25
HG10ARM2GG	0457-0610-078	E10	78	8,00	450	60	6,50
HG10ARM2GG	0610-0610-078	E10	78	10,50	600	60	6,80
HG10ARM2GG	0610-0762-078	E10	78	13,00	750	60	8,50
HG10ARM2GG	0610-0915-078	E10	78	15,50	900	60	10,00
HG10ARM2GG	0610-1220-078	E10	78	21,00	1200	60	12,50
HG10ARM2GG	0762-0762-078	E10	78	16,50	900	60	10,00
HG10ARM2GG	0762-0915-078	E10	78	20,00	1150	60	10,50
HG10ARM2GG	0915-0915-078	E10	78	24,00	1350	60	11,50

Filter Code	Size W x L x D	Filter Class EN 1822	Filter Depth mm	Filter Area m ²	Air Flow m ³ /h	In.Pressure D. Pa.	Weight kg
HG11ARM2GG	0305-0305-078	E11	78	2,80	150	70	1,85
HG11ARM2GG	0305-0610-078	E11	78	5,50	300	70	3,50
HG11ARM2GG	0457-0457-078	E11	78	6,00	350	70	4,25
HG11ARM2GG	0457-0610-078	E11	78	8,00	450	70	6,50
HG11ARM2GG	0610-0610-078	E11	78	10,50	600	70	6,80
HG11ARM2GG	0610-0762-078	E11	78	13,00	750	70	8,50
HG11ARM2GG	0610-0915-078	E11	78	15,50	900	70	10,00
HG11ARM2GG	0610-1220-078	E11	78	21,00	1200	70	12,50
HG11ARM2GG	0762-0762-078	E11	78	16,50	900	70	10,00
HG11ARM2GG	0762-0915-078	E11	78	20,00	1150	70	10,50
HG11ARM2GG	0915-0915-078	E11	78	24,00	1350	70	11,50

Filter Code	Size W x L x D	Filter Class EN 1822	Filter Depth mm	Filter Area m ²	Air Flow m ³ /h	In.Pressure D. Pa.	Weight kg
HG12ARM2GG	0305-0305-078	E12	78	2,80	150	100	1,85
HG12ARM2GG	0305-0610-078	E12	78	5,50	300	100	3,50
HG12ARM2GG	0457-0457-078	E12	78	6,00	350	100	4,25
HG12ARM2GG	0457-0610-078	E12	78	8,00	450	100	6,50
HG12ARM2GG	0610-0610-078	E12	78	10,50	600	100	6,80
HG12ARM2GG	0610-0762-078	E12	78	13,00	750	100	8,50
HG12ARM2GG	0610-0915-078	E12	78	15,50	900	100	10,00
HG12ARM2GG	0610-1220-078	E12	78	21,00	1200	100	12,50
HG12ARM2GG	0762-0762-078	E12	78	16,50	900	100	10,00
HG12ARM2GG	0762-0915-078	E12	78	20,00	1150	100	10,50
HG12ARM2GG	0915-0915-078	E12	78	24,00	1350	100	11,50

HEPAGEL-78-ARM

Hepa Filters With Gel Gasket
Jel Contalı Hepa Filtreler



HG13ARM2GG-0610-0610-078

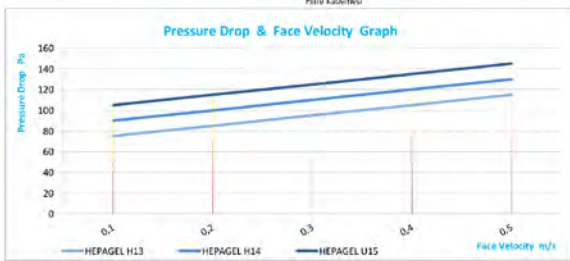
APPLICATIONS

- Used in systems made according to sealed with gel technique
- Clean rooms with LAF counters and
- Operating rooms

UYGULAMALAR

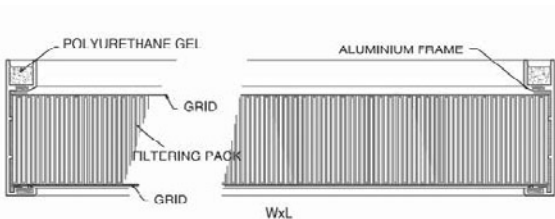
- Sızdırmaz jel tekniğine göre yapılan sistemlerde
- Temiz odalar LAF tezgahları ve ameliyat odalarında kullanılır

PRESSURE DROP&FACE VELOCITY GRAPH



Recommended final pressure drop \leq 600 Pa.

Maximum final pressure drop \leq 1000 Pa.



FILTER CODE STRUCTURE FİLTRE KOD YAPISI

Filter Type Filtre Tipi	HG	HEPAGEL
Filter Class EN 1822 Filtre Sınıfı EN 1822	13	H13
Filter Frame Filtre Çerçevesi	A	Aluminium Alüminyum
Filter Media Filtre Malzemesi	R	Glass Fiber & Hot Melt Cam Elyaf ve Sıcak Tutkal
Filter Panel Depth Filtre Panel Derinliği	M	58 mm
Filter Surface Grid Filtre Yüzey Teli	2	Two Surfaces Grid İki Yüzeyli Telli
Filter Gasket Type Filtre Conta Tipi	G	Gel Gasket Jel Conta
Filter Gasket Direction Filtre Conta Yönü	G	Air Inlet Hava Giriş
Filter Size Filtre Ölçüsü	0610-0610-078	

TECHNICAL SPECIFICATIONS TEKNİK ÖZELLİKLER

Filter Class Filtre Sınıfı	EN 1822		
Av. Efficiency Ort. Verimlilik	$\geq 99.95\%$	$\geq 99.995\%$	$\geq 99.9995\%$
Max.Working Temperature Max.Çalışma Sıcaklığı	80 °C		
Relative Humidity Bağıl Nem	100%		
Final Pressure Drop Son Basınç Düşümü	600 Pa.		
Filter Stage Filtre Kademesi	III		

HEPAGEL-78-ARM Series Technical Data**HEPAGEL-78-ARM Serisi Teknik Veri**

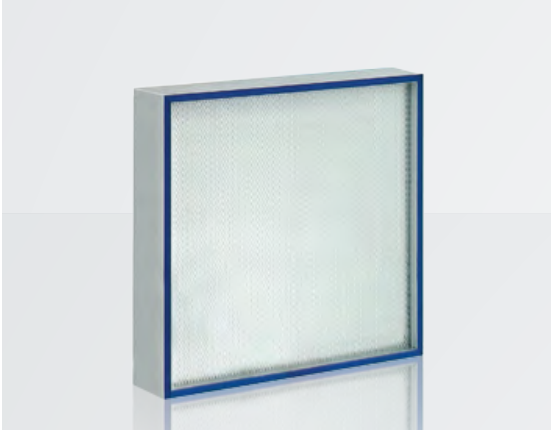
Filter Code	Size W x L x D	Filter Class EN 1822	Filter Depth mm	Filter Area m ²	Air Flow m ³ /h	In.Pressure D. Pa.	Weight kg
HG13ARM2GG	0305-0305-078	H13	78	2,80	150	110	1,85
HG13ARM2GG	0305-0610-078	H13	78	5,50	300	110	3,50
HG13ARM2GG	0457-0457-078	H13	78	6,00	350	110	4,25
HG13ARM2GG	0457-0610-078	H13	78	8,00	450	110	6,50
HG13ARM2GG	0610-0610-078	H13	78	10,50	600	110	6,80
HG13ARM2GG	0610-0762-078	H13	78	13,00	750	110	8,50
HG13ARM2GG	0610-0915-078	H13	78	15,50	900	110	10,00
HG13ARM2GG	0610-1220-078	H13	78	21,00	1200	110	12,50
HG13ARM2GG	0762-0762-078	H13	78	16,50	900	110	10,00
HG13ARM2GG	0762-0915-078	H13	78	20,00	1150	110	10,50
HG13ARM2GG	0915-0915-078	H13	78	24,00	1350	110	11,50

Filter Code	Size W x L x D	Filter Class EN 1822	Filter Depth mm	Filter Area m ²	Air Flow m ³ /h	In.Pressure D. Pa.	Weight kg
HG14ARM2GG	0305-0305-078	H14	78	2,80	150	125	1,85
HG14ARM2GG	0305-0610-078	H14	78	5,50	300	125	3,50
HG14ARM2GG	0457-0457-078	H14	78	6,00	350	125	4,25
HG14ARM2GG	0457-0610-078	H14	78	8,00	450	125	6,50
HG14ARM2GG	0610-0610-078	H14	78	10,50	600	125	6,80
HG14ARM2GG	0610-0762-078	H14	78	13,00	750	125	8,50
HG14ARM2GG	0610-0915-078	H14	78	15,50	900	125	10,00
HG14ARM2GG	0610-1220-078	H14	78	21,00	1200	125	12,50
HG14ARM2GG	0762-0762-078	H14	78	16,50	900	125	10,00
HG14ARM2GG	0762-0915-078	H14	78	20,00	1150	125	10,50
HG14ARM2GG	0915-0915-078	H14	78	24,00	1350	125	11,50

Filter Code	Size W x L x D	Filter Class EN 1822	Filter Depth mm	Filter Area m ²	Air Flow m ³ /h	In.Pressure D. Pa.	Weight kg
HG15ARM2GG	0305-0305-078	U15	78	2,80	150	140	1,85
HG15ARM2GG	0305-0610-078	U15	78	5,50	300	140	3,50
HG15ARM2GG	0457-0457-078	U15	78	6,00	350	140	4,25
HG15ARM2GG	0457-0610-078	U15	78	8,00	450	140	6,50
HG15ARM2GG	0610-0610-078	U15	78	10,50	600	140	6,80
HG15ARM2GG	0610-0762-078	U15	78	13,00	750	140	8,50
HG15ARM2GG	0610-0915-078	U15	78	15,50	900	140	10,00
HG15ARM2GG	0610-1220-078	U15	78	21,00	1200	140	12,50
HG15ARM2GG	0762-0762-078	U15	78	16,50	900	140	10,00
HG15ARM2GG	0762-0915-078	U15	78	20,00	1150	140	10,50
HG15ARM2GG	0915-0915-078	U15	78	24,00	1350	140	11,50

HEPAGEL-91-ARM

Hepa Filters With Gel Gasket
Jel Contalı Hepa Filtreler



HG11ARM2GG-0610-0610-091

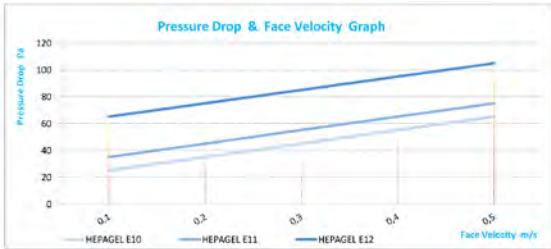
APPLICATIONS

- Used in systems made according to sealed with gel technique
- Clean rooms with LAF counters and
- Operating rooms

UYGULAMALAR

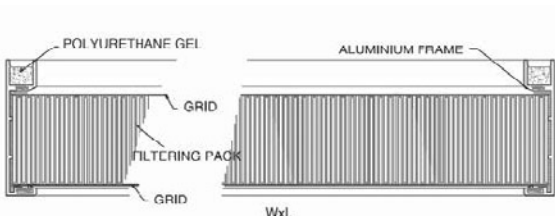
- Sızdırmaz jel tekniğine göre yapılan sistemlerde
- Temiz odalar LAF tezgahları ve ameliyat odalarında kullanılır

PRESSURE DROP&FACE VELOCITY GRAPH



Recommended final pressure drop \leq 600 Pa.

Maximum final pressure drop \leq 1000 Pa.



FILTER CODE STRUCTURE FİLTRE KOD YAPISI

Filter Type	HG HEPAGEL	
Filter Tipi	HG HEPAGEL	
Filter Class EN 1822	11	E11
Filtre Sınıfı EN 1822	11	E11
Filter Frame	A	Aluminium
Filtre Çerçevesi	A	Alüminyum
Filter Media	R	Glass Fiber & Hot Melt
Filtre Malzemesi	R	Cam Elyaf ve Sıcak Tutkal
Filter Panel Depth	M	58 mm
Filtre Panel Derinliği	M	58 mm
Filter Surface Grid	2	Face Grids Air Out
Filtre Yüzey Teli	2	Yüzey Teli Hava Çıkışta
Filter Gasket Type	G	Gel Gasket
Filtre Conta Tipi	G	Jel Conta
Filter Gasket Direction	G	Air Inlet
Filtre Conta Yönü	G	Hava Giriş
Filter Size	0610-0610-091	
Filtre Ölçüsü	0610-0610-091	

TECHNICAL SPECIFICATIONS TEKNİK ÖZELLİKLER

Filter Class	EN 1822
Filtre Sınıfı	E10 E11 E12
Av. Efficiency	$\geq 85\%$ $\geq 95\%$ $\geq 99,5\%$
Ort. Verimlilik	$\geq 85\%$ $\geq 95\%$ $\geq 99,5\%$
Max.Working Temperature	80 °C
Max.Çalışma Sıcaklığı	80 °C
Relative Humidity	100%
Bağıl Nem	100%
Final Pressure Drop	600 Pa.
Son Basınç Düşümü	600 Pa.
Filter Stage	III
Filtre Kademesi	III

HEPAGEL-91-ARM Series Technical Data

HEPAGEL-91-ARM Serisi Teknik Veri

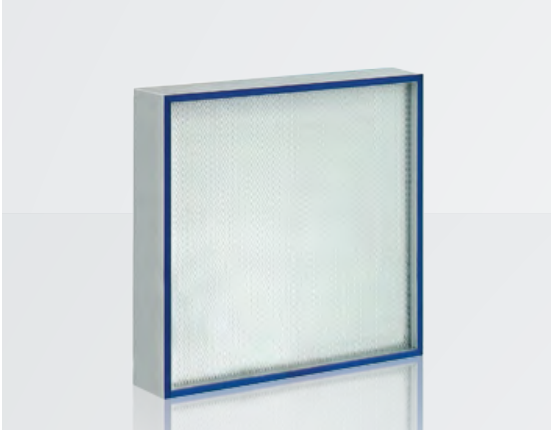
Filter Code	Size W x L x D	Filter Class EN 1822	Filter Depth mm	Filter Area m ²	Air Flow m ³ /h	In.Pressure D. Pa.	Weight kg
HG10ARM2GG	0305-0305-091	E10	91	2,80	150	60	1,85
HG10ARM2GG	0305-0610-091	E10	91	5,50	300	60	3,50
HG10ARM2GG	0457-0457-091	E10	91	6,00	350	60	4,25
HG10ARM2GG	0457-0610-091	E10	91	8,00	450	60	6,50
HG10ARM2GG	0610-0610-091	E10	91	10,50	600	60	6,80
HG10ARM2GG	0610-0762-091	E10	91	13,00	750	60	8,50
HG10ARM2GG	0610-0915-091	E10	91	15,50	900	60	10,00
HG10ARM2GG	0610-1220-091	E10	91	21,00	1200	60	12,50
HG10ARM2GG	0762-0762-091	E10	91	16,50	900	60	10,00
HG10ARM2GG	0762-0915-091	E10	91	20,00	1150	60	10,50
HG10ARM2GG	0915-0915-091	E10	91	24,00	1350	60	11,50

Filter Code	Size W x L x D	Filter Class EN 1822	Filter Depth mm	Filter Area m ²	Air Flow m ³ /h	In.Pressure D. Pa.	Weight kg
HG11ARM2GG	0305-0305-091	E11	91	2,80	150	70	1,85
HG11ARM2GG	0305-0610-091	E11	91	5,50	300	70	3,50
HG11ARM2GG	0457-0457-091	E11	91	6,00	350	70	4,25
HG11ARM2GG	0457-0610-091	E11	91	8,00	450	70	6,50
HG11ARM2GG	0610-0610-091	E11	91	10,50	600	70	6,80
HG11ARM2GG	0610-0762-091	E11	91	13,00	750	70	8,50
HG11ARM2GG	0610-0915-091	E11	91	15,50	900	70	10,00
HG11ARM2GG	0610-1220-091	E11	91	21,00	1200	70	12,50
HG11ARM2GG	0762-0762-091	E11	91	16,50	900	70	10,00
HG11ARM2GG	0762-0915-091	E11	91	20,00	1150	70	10,50
HG11ARM2GG	0915-0915-091	E11	91	24,00	1350	70	11,50

Filter Code	Size W x L x D	Filter Class EN 1822	Filter Depth mm	Filter Area m ²	Air Flow m ³ /h	In.Pressure D. Pa.	Weight kg
HG12ARM2GG	0305-0305-091	E12	91	2,80	150	100	1,85
HG12ARM2GG	0305-0610-091	E12	91	5,50	300	100	3,50
HG12ARM2GG	0457-0457-091	E12	91	6,00	350	100	4,25
HG12ARM2GG	0457-0610-091	E12	91	8,00	450	100	6,50
HG12ARM2GG	0610-0610-091	E12	91	10,50	600	100	6,80
HG12ARM2GG	0610-0762-091	E12	91	13,00	750	100	8,50
HG12ARM2GG	0610-0915-091	E12	91	15,50	900	100	10,00
HG12ARM2GG	0610-1220-091	E12	91	21,00	1200	100	12,50
HG12ARM2GG	0762-0762-091	E12	91	16,50	900	100	10,00
HG12ARM2GG	0762-0915-091	E12	91	20,00	1150	100	10,50
HG12ARM2GG	0915-0915-091	E12	91	24,00	1350	100	11,50

HEPAGEL-91-ARM

Hepa Filters With Gel Gasket
Jel Contalı Hepa Filtreler



HG13ARM2GG-0610-0610-091

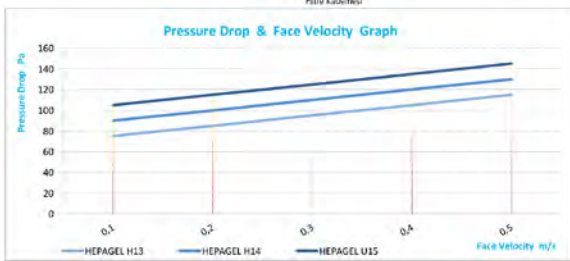
APPLICATIONS

- Used in systems made according to sealed with gel technique
- Clean rooms with LAF counters and
- Operating rooms

UYGULAMALAR

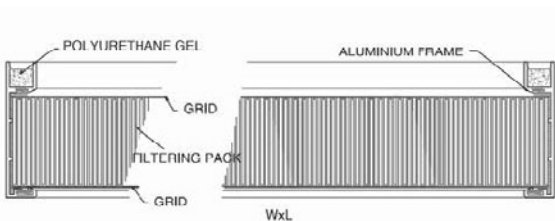
- Sızdırmaz jel tekniğine göre yapılan sistemlerde
- Temiz odalar LAF tezgahları ve ameliyat odalarında kullanılır

PRESSURE DROP&FACE VELOCITY GRAPH



Recommended final pressure drop \leq 600 Pa.

Maximum final pressure drop \leq 1000 Pa.



FILTER CODE STRUCTURE FİLTRE KOD YAPISI

Filter Type Filtre Tipi	HG	HEPAGEL
Filter Class EN 1822 Filtre Sınıfı EN 1822	13	H13
Filter Frame Filtre Çerçevesi	A	Aluminium Alüminyum
Filter Media Filtre Malzemesi	R	Glass Fiber & Hot Melt Cam Elyaf ve Sıcak Tutkal
Filter Panel Depth Filtre Panel Derinliği	M	58 mm
Filter Surface Grid Filtre Yüzey Teli	2	Two Surfaces Grid İki Yüzeyli Telli
Filter Gasket Type Filtre Conta Tipi	G	Gel Gasket Jel Conta
Filter Gasket Direction Filtre Conta Yönü	G	Air Inlet Hava Giriş
Filter Size Filtre Ölçüsü	0610-0610-091	

TECHNICAL SPECIFICATIONS TEKNİK ÖZELLİKLER

Filter Class Filtre Sınıfı	EN 1822		
Av. Efficiency Ort. Verimlilik	$\geq 99.95\%$	$\geq 99.995\%$	$\geq 99.9995\%$
Max.Working Temperature Max.Çalışma Sıcaklığı	80 °C		
Relative Humidity Bağıl Nem	100%		
Final Pressure Drop Son Basınç Düşümü	600 Pa.		
Filter Stage Filtre Kademesi	III		

HEPAGEL-91-ARM Series Technical Data

HEPAGEL-91-ARM Serisi Teknik Veri

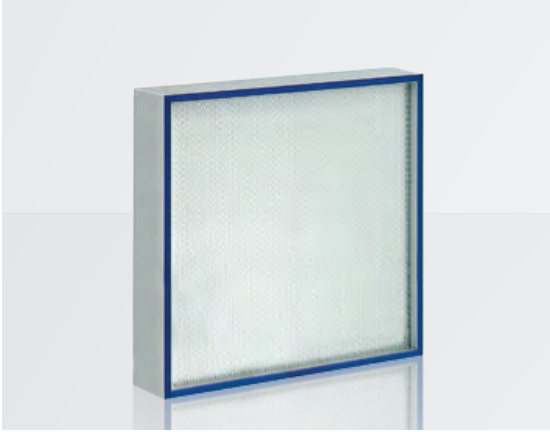
Filter Code	Size W x L x D	Filter Class EN 1822	Filter Depth mm	Filter Area m ²	Air Flow m ³ /h	In. Pressure D. Pa.	Weight kg
HG13ARM2GG	0305-0305-091	H13	91	2,80	150	110	1,85
HG13ARM2GG	0305-0610-091	H13	91	5,50	300	110	3,50
HG13ARM2GG	0457-0457-091	H13	91	6,00	350	110	4,25
HG13ARM2GG	0457-0610-091	H13	91	8,00	450	110	6,50
HG13ARM2GG	0610-0610-091	H13	91	10,50	600	110	6,80
HG13ARM2GG	0610-0762-091	H13	91	13,00	750	110	8,50
HG13ARM2GG	0610-0915-091	H13	91	15,50	900	110	10,00
HG13ARM2GG	0610-1220-091	H13	91	21,00	1200	110	12,50
HG13ARM2GG	0762-0762-091	H13	91	16,50	900	110	10,00
HG13ARM2GG	0762-0915-091	H13	91	20,00	1150	110	10,50
HG13ARM2GG	0915-0915-091	H13	91	24,00	1350	110	11,50

Filter Code	Size W x L x D	Filter Class EN 1822	Filter Depth mm	Filter Area m ²	Air Flow m ³ /h	In. Pressure D. Pa.	Weight kg
HG14ARM2GG	0305-0305-091	H14	91	2,80	150	125	1,85
HG14ARM2GG	0305-0610-091	H14	91	5,50	300	125	3,50
HG14ARM2GG	0457-0457-091	H14	91	6,00	350	125	4,25
HG14ARM2GG	0457-0610-091	H14	91	8,00	450	125	6,50
HG14ARM2GG	0610-0610-091	H14	91	10,50	600	125	6,80
HG14ARM2GG	0610-0762-091	H14	91	13,00	750	125	8,50
HG14ARM2GG	0610-0915-091	H14	91	15,50	900	125	10,00
HG14ARM2GG	0610-1220-091	H14	91	21,00	1200	125	12,50
HG14ARM2GG	0762-0762-091	H14	91	16,50	900	125	10,00
HG14ARM2GG	0762-0915-091	H14	91	20,00	1150	125	10,50
HG14ARM2GG	0915-0915-091	H14	91	24,00	1350	125	11,50

Filter Code	Size W x L x D	Filter Class EN 1822	Filter Depth mm	Filter Area m ²	Air Flow m ³ /h	In. Pressure D. Pa.	Weight kg
HG15ARM2GG	0305-0305-091	U15	91	2,80	150	140	1,85
HG15ARM2GG	0305-0610-091	U15	91	5,50	300	140	3,50
HG15ARM2GG	0457-0457-091	U15	91	6,00	350	140	4,25
HG15ARM2GG	0457-0610-091	U15	91	8,00	450	140	6,50
HG15ARM2GG	0610-0610-091	U15	91	10,50	600	140	6,80
HG15ARM2GG	0610-0762-091	U15	91	13,00	750	140	8,50
HG15ARM2GG	0610-0915-091	U15	91	15,50	900	140	10,00
HG15ARM2GG	0610-1220-091	U15	91	21,00	1200	140	12,50
HG15ARM2GG	0762-0762-091	U15	91	16,50	900	140	10,00
HG15ARM2GG	0762-0915-091	U15	91	20,00	1150	140	10,50
HG15ARM2GG	0915-0915-091	U15	91	24,00	1350	140	11,50

HEPAGEL-104-ARM

Hepa Filters With Gel Gasket
Jel Contalı Hepa Filtreler



HG11ARM2GG-0610-0610-104

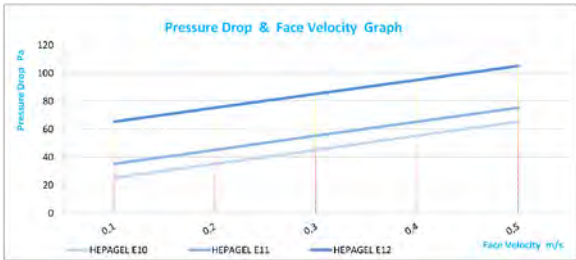
APPLICATIONS

- Used in systems made according to sealed with gel technique
- Clean rooms with LAF counters and
- Operating rooms

UYGULAMALAR

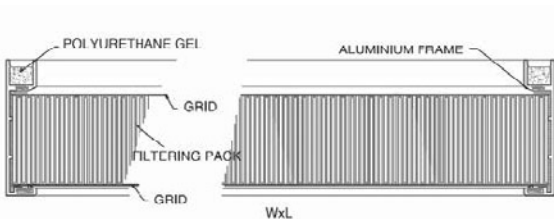
- Sızdırmaz jel tekniğine göre yapılan sistemlerde
- Temiz odalar LAF tezgahları ve ameliyat odalarında kullanılır

PRESSURE DROP&FACE VELOCITY GRAPH



Recommended final pressure drop \leq 600 Pa.

Maximum final pressure drop \leq 1000 Pa.



FILTER CODE STRUCTURE FİLTRE KOD YAPISI

Filter Type	HG HEPAGEL	
Filtre Tipi		
Filter Class EN 1822	11	E11
Filtre Sınıfı EN 1822		
Filter Frame	A	Aluminium
Filtre Çerçevesi		Alüminyum
Filter Media	R	Glass Fiber & Hot Melt
Filtre Malzemesi		Cam Elyaf ve Sıcak Tutkal
Filter Panel Depth	M	58 mm
Filtre Panel Derinliği		
Filter Surface Grid	2	Two Surfaces Grid
Filtre Yüzey Teli		İki Yüzeyli Telli
Filter Gasket Type	G	Gel Gasket
Filtre Conta Tipi		Jel Conta
Filter Gasket Direction	G	Air Inlet
Filtre Conta Yönü		Hava Giriş
Filter Size	0610-0610-104	
Filtre Ölçüsü		

TECHNICAL SPECIFICATIONS TEKNİK ÖZELLİKLER

Filter Class	EN 1822
Filtre Sınıfı	E10 E11 E12
Av. Efficiency	\geq 85% \geq 95% \geq 99,5%
Ort. Verimlilik	
Max.Working Temperature	80 °C
Max.Çalışma Sıcaklığı	
Relative Humidity	100%
Bağıl Nem	
Final Pressure Drop	600 Pa.
Son Basınç Düşümü	
Filter Stage	III
Filtre Kademesi	

HEPAGEL-104-ARM Series Technical Data

HEPAGEL-104-ARM Serisi Teknik Veri

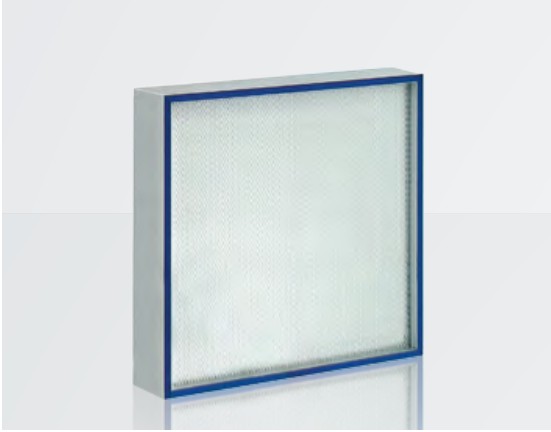
Filter Code	Size W x L x D	Filter Class EN 1822	Filter Depth mm	Filter Area m ²	Air Flow m ³ /h	In.Pressure D. Pa.	Weight kg
HG10ARM2GG	0305-0305-104	E10	104	2,80	150	60	2,20
HG10ARM2GG	0305-0610-104	E10	104	5,50	300	60	4,00
HG10ARM2GG	0457-0457-104	E10	104	6,00	350	60	5,00
HG10ARM2GG	0457-0610-104	E10	104	8,00	450	60	7,50
HG10ARM2GG	0610-0610-104	E10	104	10,50	600	60	7,80
HG10ARM2GG	0610-0762-104	E10	104	13,00	750	60	10,00
HG10ARM2GG	0610-0915-104	E10	104	15,50	900	60	11,50
HG10ARM2GG	0610-1220-104	E10	104	21,00	1200	60	14,25
HG10ARM2GG	0762-0762-104	E10	104	16,50	900	60	11,50
HG10ARM2GG	0762-0915-104	E10	104	20,00	1150	60	12,00
HG10ARM2GG	0915-0915-104	E10	104	24,00	1350	60	13,25

Filter Code	Size W x L x D	Filter Class EN 1822	Filter Depth mm	Filter Area m ²	Air Flow m ³ /h	In.Pressure D. Pa.	Weight kg
HG11ARM2GG	0305-0305-104	E11	104	2,80	150	70	2,20
HG11ARM2GG	0305-0610-104	E11	104	5,50	300	70	4,00
HG11ARM2GG	0457-0457-104	E11	104	6,00	350	70	5,00
HG11ARM2GG	0457-0610-104	E11	104	8,00	450	70	7,50
HG11ARM2GG	0610-0610-104	E11	104	10,50	600	70	7,80
HG11ARM2GG	0610-0762-104	E11	104	13,00	750	70	10,00
HG11ARM2GG	0610-0915-104	E11	104	15,50	900	70	11,50
HG11ARM2GG	0610-1220-104	E11	104	21,00	1200	70	14,25
HG11ARM2GG	0762-0762-104	E11	104	16,50	900	70	11,50
HG11ARM2GG	0762-0915-104	E11	104	20,00	1150	70	12,00
HG11ARM2GG	0915-0915-104	E11	104	24,00	1350	70	13,25

Filter Code	Size W x L x D	Filter Class EN 1822	Filter Depth mm	Filter Area m ²	Air Flow m ³ /h	In.Pressure D. Pa.	Weight kg
HG12ARM2GG	0305-0305-104	H12	104	2,80	150	100	2,20
HG12ARM2GG	0305-0610-104	H12	104	5,50	300	100	4,00
HG12ARM2GG	0457-0457-104	H12	104	6,00	350	100	5,00
HG12ARM2GG	0457-0610-104	H12	104	8,00	450	100	7,50
HG12ARM2GG	0610-0610-104	H12	104	10,50	600	100	7,80
HG12ARM2GG	0610-0762-104	H12	104	13,00	750	100	10,00
HG12ARM2GG	0610-0915-104	H12	104	15,50	900	100	11,50
HG12ARM2GG	0610-1220-104	H12	104	21,00	1200	100	14,25
HG12ARM2GG	0762-0762-104	H12	104	16,50	900	100	11,50
HG12ARM2GG	0762-0915-104	H12	104	20,00	1150	100	12,00
HG12ARM2GG	0915-0915-104	H12	104	24,00	1350	100	13,25

HEPAGEL-104-ARM

Hepa Filters With Gel Gasket
Jel Contalı Hepa Filtreler



HG13ARM2GG-0610-0610-104

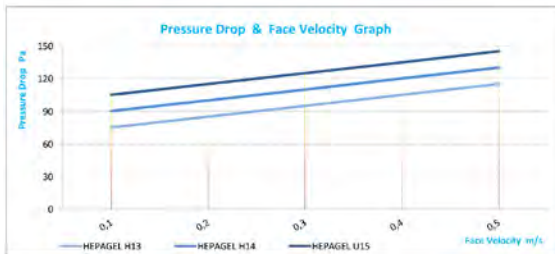
APPLICATIONS

- Used in systems made according to sealed with gel technique
- Clean rooms with LAF counters and
- Operating rooms

UYGULAMALAR

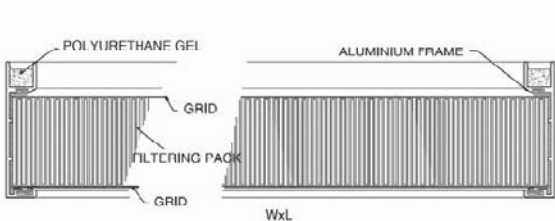
- Sızdırmaz jel tekniğine göre yapılan sistemlerde
- Temiz odalar LAF tezgahları ve ameliyat odalarında kullanılır

PRESSURE DROP&FACE VELOCITY GRAPH



Recommended final pressure drop \leq 600 Pa.

Maximum final pressure drop \leq 1000 Pa.



FILTER CODE STRUCTURE FİLTRE KOD YAPISI

Filter Type Filtre Tipi	HG	HEPAGEL
Filter Class EN 1822 Filtre Sınıfı EN 1822	13	H13
Filter Frame Filtre Çerçevesi	A	Aluminium Alüminyum
Filter Media Filtre Malzemesi	R	Glass Fiber & Hot Melt Cam Elyaf ve Sıcak Tutkal
Filter Panel Depth Filtre Panel Derinliği	M	58 mm
Filter Surface Grid Filtre Yüzey Teli	2	Two Surfaces Grid İki Yüzeyli Telli
Filter Gasket Type Filtre Conta Tipi	G	Gel Gasket Jel Conta
Filter Gasket Direction Filtre Conta Yönü	G	Air Inlet Hava Giriş
Filter Size Filtre Ölçüsü	0610-0610-104	

TECHNICAL SPECIFICATIONS TEKNİK ÖZELLİKLER

Filter Class Filtre Sınıfı	EN 1822
Av. Efficiency Ort. Verimlilik	H13 H14 U15 $\geq 99.95\%$ $\geq 99.995\%$ $\geq 99.9995\%$
Max.Working Temperature Max.Çalışma Sıcaklığı	80 °C
Relative Humidity Bağıl Nem	100%
Final Pressure Drop Son Basınç Düşümü	600 Pa.
Filter Stage Filtre Kademesi	III

HEPAGEL-104-ARM Series Technical Data

HEPAGEL-104-ARM Serisi Teknik Veri

Filter Code	Size W x L x D	Filter Class EN 1822	Filter Depth mm	Filter Area m ²	Air Flow m ³ /h	In.Pressure D. Pa.	Weight kg
HG13ARM2GG	0305-0305-104	H13	104	2,80	150	110	2,20
HG13ARM2GG	0305-0610-104	H13	104	5,50	300	110	4,00
HG13ARM2GG	0457-0457-104	H13	104	6,00	350	110	5,00
HG13ARM2GG	0457-0610-104	H13	104	8,00	450	110	7,50
HG13ARM2GG	0610-0610-104	H13	104	10,50	600	110	7,80
HG13ARM2GG	0610-0762-104	H13	104	13,00	750	110	10,00
HG13ARM2GG	0610-0915-104	H13	104	15,50	900	110	11,50
HG13ARM2GG	0610-1220-104	H13	104	21,00	1200	110	14,25
HG13ARM2GG	0762-0762-104	H13	104	16,50	900	110	11,50
HG13ARM2GG	0762-0915-104	H13	104	20,00	1150	110	12,00
HG13ARM2GG	0915-0915-104	H13	104	24,00	1350	110	13,25

Filter Code	Size W x L x D	Filter Class EN 1822	Filter Depth mm	Filter Area m ²	Air Flow m ³ /h	In.Pressure D. Pa.	Weight kg
HG14ARM2GG	0305-0305-104	H14	104	2,80	150	125	2,20
HG14ARM2GG	0305-0610-104	H14	104	5,50	300	125	4,00
HG14ARM2GG	0457-0457-104	H14	104	6,00	350	125	5,00
HG14ARM2GG	0457-0610-104	H14	104	8,00	450	125	7,50
HG14ARM2GG	0610-0610-104	H14	104	10,50	600	125	7,80
HG14ARM2GG	0610-0762-104	H14	104	13,00	750	125	10,00
HG14ARM2GG	0610-0915-104	H14	104	15,50	900	125	11,50
HG14ARM2GG	0610-1220-104	H14	104	21,00	1200	125	14,25
HG14ARM2GG	0762-0762-104	H14	104	16,50	900	125	11,50
HG14ARM2GG	0762-0915-104	H14	104	20,00	1150	125	12,00
HG14ARM2GG	0915-0915-104	H14	104	24,00	1350	125	13,25

Filter Code	Size W x L x D	Filter Class EN 1822	Filter Depth mm	Filter Area m ²	Air Flow m ³ /h	In.Pressure D. Pa.	Weight kg
HG15ARM2GG	0305-0305-104	U15	104	2,80	150	140	2,20
HG15ARM2GG	0305-0610-104	U15	104	5,50	300	140	4,00
HG15ARM2GG	0457-0457-104	U15	104	6,00	350	140	5,00
HG15ARM2GG	0457-0610-104	U15	104	8,00	450	140	7,50
HG15ARM2GG	0610-0610-104	U15	104	10,50	600	140	7,80
HG15ARM2GG	0610-0762-104	U15	104	13,00	750	140	10,00
HG15ARM2GG	0610-0915-104	U15	104	15,50	900	140	11,50
HG15ARM2GG	0610-1220-104	U15	104	21,00	1200	140	14,25
HG15ARM2GG	0762-0762-104	U15	104	16,50	900	140	11,50
HG15ARM2GG	0762-0915-104	U15	104	20,00	1150	140	12,00
HG15ARM2GG	0915-0915-104	U15	104	24,00	1350	140	13,25